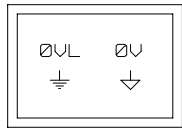
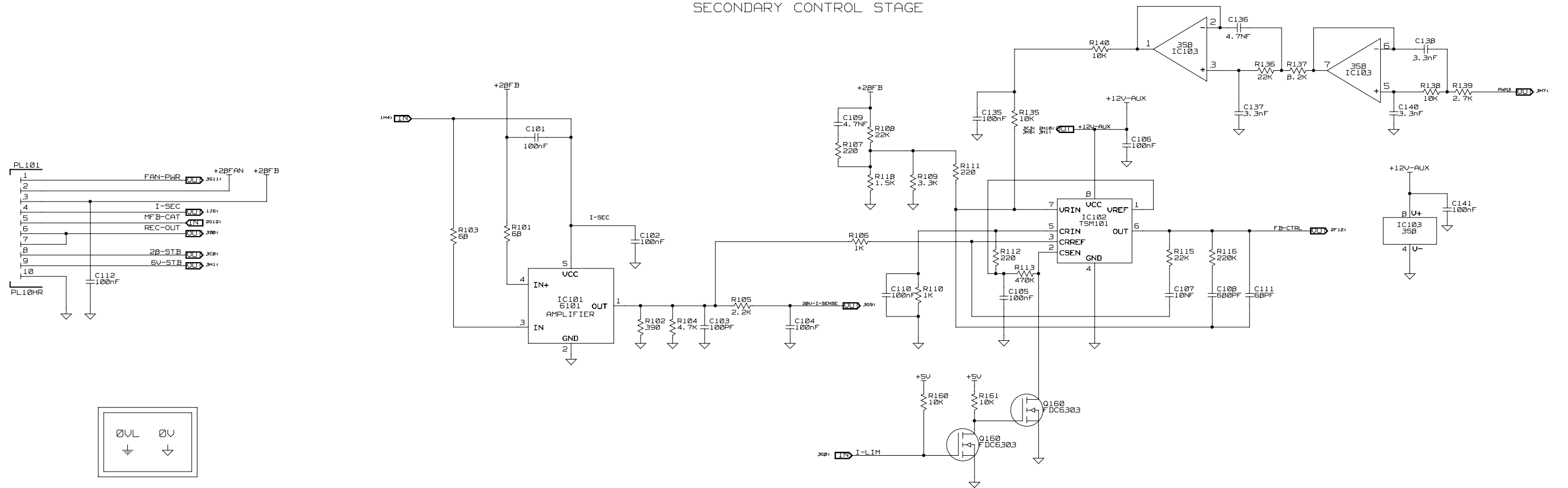
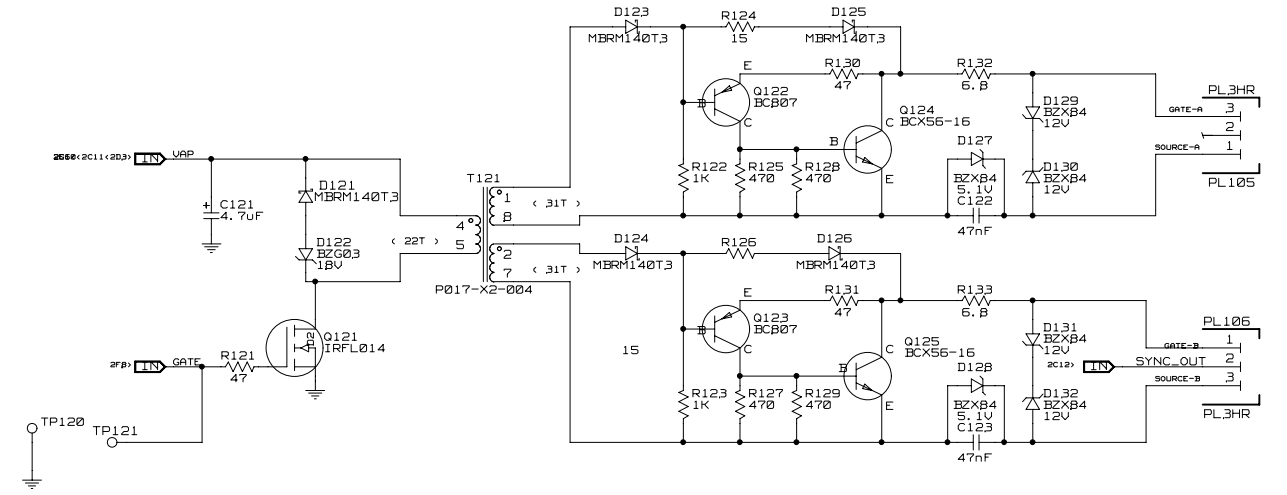


SECONDARY CONTROL STAGE



GATE DRIVE

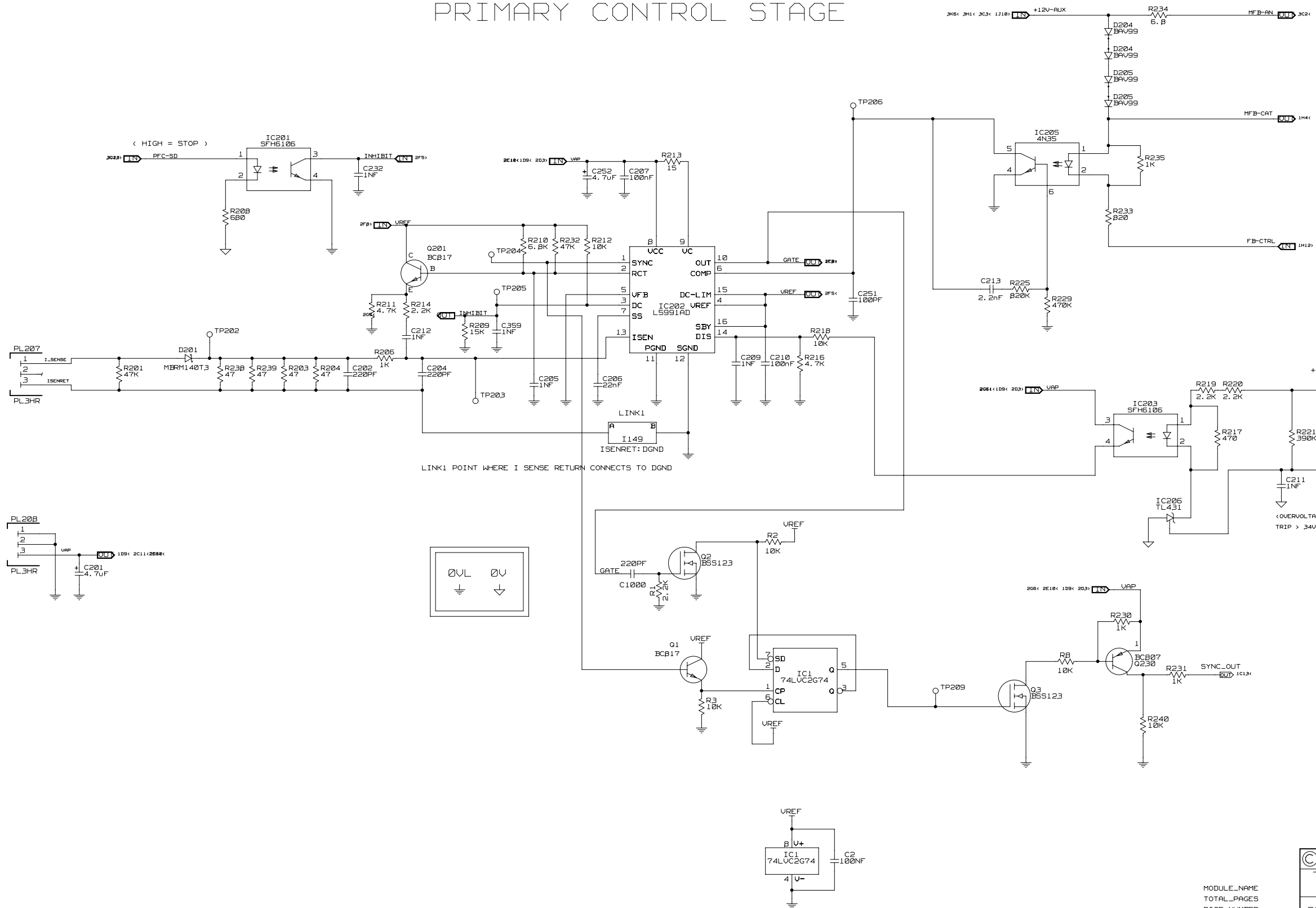


REV/ISS	AMENDMENTS	DRAWN	CHKD	D. O.	APVD	DATE
16A	REPLACING EOL PART.	PG	RV		SH	09/11/05
15A	CHANGED PER ECO.101250102	TB	RV		RV	31/05/05
14B	CHANGED PER ECO.101200263	TB	RV		RV	30/03/04
14A	CHANGED PER ECO.101200229	BAM	RV		RV	14/10/03
13A	CHANGED PER ECO.101200225	TB	RV		RV	03/10/03
12B	CHANGED PER ECO	BAM	RV		RV	24/09/03
12A	CHANGED PER ECO	BAM	RV		RV	22/09/03
11A	CHANGED PER ECO 101200201	BAM	RV		RV	03/08/03
10B	CORRECTED ORIENTATION FOR D310 AND D311 SHEET 3	BAM	RV		RV	10/06/03
10A	CHANGED PER ECO 101200069	BAM	RV		RV	07/05/03

PAGE\_NUMBER  
TOTAL\_PAGES  
MODULE\_NAME

© TAIT ELECTRONICS		A1
TBB000 PMU ACDC CONTROL AC-DC CONTROL		
IPN: 220-02018-16	ISSUE: A	VARIANT NUMBER: ?
FILE DATE: Thu Nov 09 14:17:08 2005		
ENGINEER: SH	FILE NAME: 220_02018	SHEET NUMBER: 1 OF 3

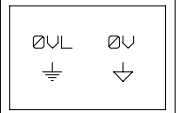
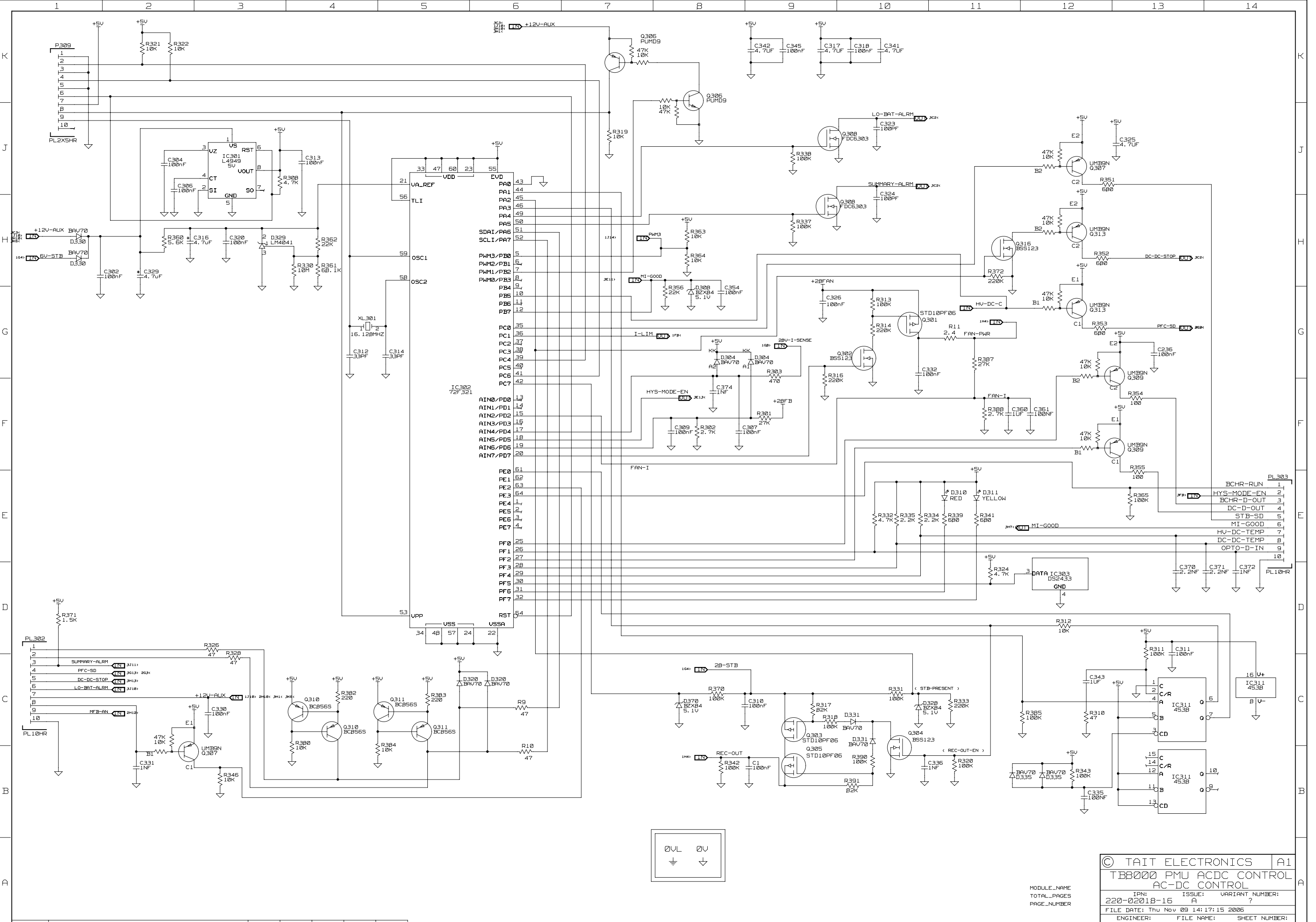
# PRIMARY CONTROL STAGE



© TAIT ELECTRONICS		A1
TB8000 PMU ACDC CONTROL		
AC-DC CONTROL		
IPN:	ISSUE:	VARIANT NUMBER:
220-02018-16	A	?
FILE DATE: Thu Nov 09 14:17:13 2006		
ENGINEER:	FILE NAME:	SHEET NUMBER:
SH	220_02018	2 OF 3

REV/ISS	AMENDMENTS	DRAWN	CHKD	D. O.	APVD	DATE
1						
2						
3						
4						
5						
6						
7						
8						
9						
10						
11						
12						
13						
14						

MODULE\_NAME  
TOTAL\_PAGES  
PAGE\_NUMBER



© TAIT ELECTRONICS		A1
TBB000 PMU ACDC CONTROL		
AC-DC CONTROL		
IPN:	ISSUE:	VARIANT NUMBER:
220-02018-16	A	?
FILE DATE: Thu Nov 09 14:17:15 2006		
ENGINEER:	FILE NAME:	SHEET NUMBER:
SH	220_02018	3 OF 3

REV/ISS	AMENDMENTS	DRAWN	CHKD	D. O.	APVD	DATE
1						
2						
3						
4						
5						
6						
7						
8						
9						
10						
11						
12						
13						
14						

MODULE\_NAME  
TOTAL\_PAGES  
PAGE\_NUMBER